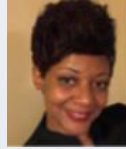


bit.ly/SoundWordWalls

**SOUND WORD WALLS:
Simultaneously Strengthening
Fluency, Vocabulary, and
Comprehension**


Dr. Monique Bassett, Klein ISD
December 5, 2019

Welcome!



I am Dr. Monique Bassett.

This is my 21st year as an educator. I am early childhood and ESL certified, and have received extensive training in structured literacy. My first teaching experience was in a Kindergarten classroom and that is where I fell in love with teaching children how to read! I currently serve as a program coordinator for reading intervention in Klein ISD.

You can contact me at  @mbassett1 or mbassett1@kleinisd.net

Today we will...

Discuss the differences between traditional word walls and sound word walls.

Discover how moving from traditional word walls can help students improve their fluency, vocabulary, and comprehension.

Staggering Statistics

- ❑ Approximately 58% of Texas students come to school Kindergarten ready (Texas Commision on School Finance Report).
- ❑ In 2018, 4 out of 10 students met the Texas 3rd grade reading standard (Texas Commision on School Finance Report).
- ❑ Texas ranked 46th in the country for 4th grade reading proficiency (2017 NAEP).
- ❑ 80% of struggling readers have difficulty with decoding or word reading.

Primary Characteristics of Dyslexia

- Difficulty reading words in isolation
- Difficulty accurately decoding unfamiliar words
- Difficulty with oral reading (slow, inaccurate, or labored without prosody)
- Difficulty spelling

Dyslexia Instruction

- Phonological awareness
- Sound -symbol association
- Syllabication
- Orthography
- Morphology
- Syntax
- Comprehension
- Fluency

5 Essential Components of Reading Instruction

- Phonological Awareness
- Phonics
- Fluency
- Vocabulary
- Comprehension

Delivery Methods

- Simultaneous, multisensory
- Explicit
- Systematic and Cumulative
- Synthetic Instruction
- Analytic Instruction
- Diagnostic teaching

Knowledge is Power!

- Know how language works
- Understand phonology
- Understand the written system



Traditional Word Walls

- ❑ Words are sometimes listed in alphabetical order
- ❑ Includes high frequency words and sight words
- ❑ Only represents the letters A - Z



Are high frequency words and sight words the same?

the
of
and
they
come



words
down
you
with
like

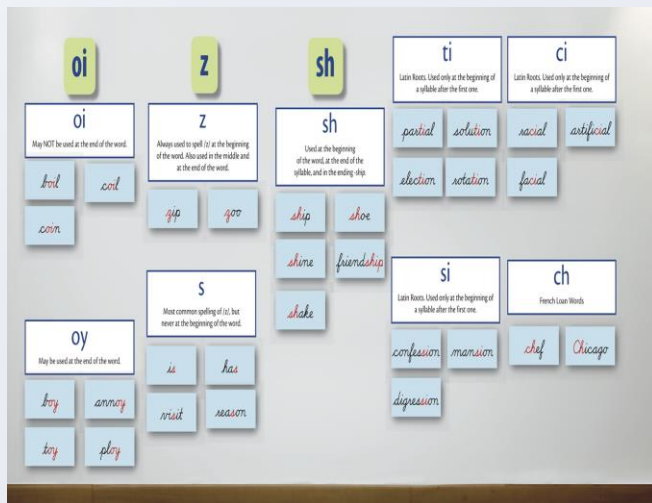
Sound Word Walls

- ❑ Includes the 44 phonemes and their grapheme representations (orthographic patterns)
- ❑ Articulation pictures help to anchor learning
- ❑ Labels used to show airflow and voicing (stop, nasal, fricative, affricate, glides, liquids; unvoiced / voiced)

Sound word walls can be used in conjunction with your school's designated phonics program.

44 Phoneme Sounds

200+ Ways to Spell Sounds



What grade level are syllable types first introduced?

6 Syllable Types

Closed syllable

Open syllable

Vowel-consonant-e syllable

Vowel pair syllable

Vowel-r syllable

Final stable syllable

What is the difference between a root word and a base word? Or are they the same?

Word Part Deck

Morphology

Affixes

- Prefixes
- suffixes

Root

- Greek or latin
- Bound morphemes

Base word

- Free morphemes



Thank you for your time!

Any questions?

You can contact me at

@mbassett1 or mbassett1@kleinisd.net

♥ CREDITS

Special thanks to all the people who made and released these awesome resources for free:

- ❑ Presentation template by [SlidesCarnival](#)
- ❑ Photographs by [Startup Stock Photos](#)